



# Make Mine a Marquise!

## The Fancy Cut Set to Shine in 2025

**Whilst 2024 was undoubtedly the year of the oval engagement ring, 2025 looks to feature the marquise cut much more prominently!**

According to the Rapaport Diamond Report Volume 47, no. 48 – marquise cut diamonds are benefitting from an “excellent market – the most expensive fancy shape – supported by shortages.” According to the list, these exclusive shapes can currently price in at up to 15% more than their shorter fancy cut counterparts – suggesting that these elongated fancy cuts are set for a good year ahead.

Celebrity influence naturally plays a role in the demand for fancy shapes. Selena Gomez's engagement ring from Benny Blanco in December 2024 features a principal marquise cut diamond. Paying homage to her 2015 song “Good for You” in which she compares herself to a marquise cut diamond, this ring features a sizeable marquise cut stone accented beautifully with a round brilliant cut diamond band.



Selena's ring is reportedly valued at \$1,000,000 (Harpers Bazaar).

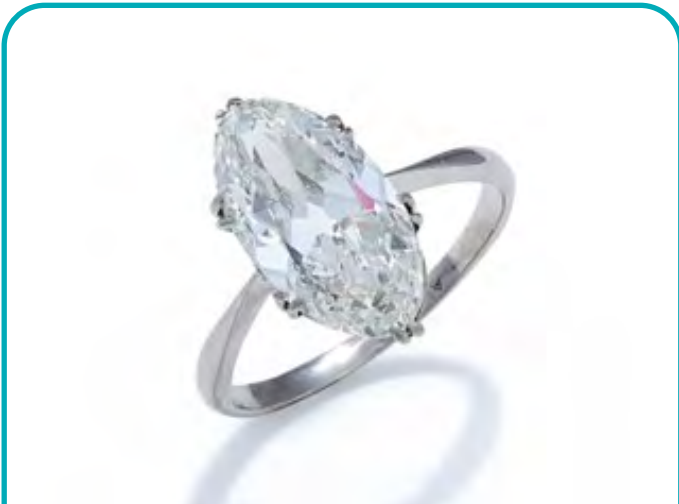
### The history of the Marquise Cut

The marquise shape is an elongated oval with pointed ends. This distinctive navette shape diamond dates to 18th century France and King Louis XV, who commissioned a stone fashioned in the shape of his lover Marquise de Pompadour's lips. The marquise cut diamond was born!

### Value Factors of Marquise Cut Diamonds

Universally with natural diamonds, of course the famous 4 Cs (colour, clarity, cut, carat weight) are the key determining factors for value with these stones. The better the colour grade either on the colourless or fancy colour scale, with minimal inclusions, excellent cut grade and maximum carat weight are all attributes of the most valuable stones.

Another incredibly important factor to consider particularly for elongated fancy shapes such as the marquise cut is the proportion, and more specifically, the length to width ratio! This ratio is deduced by dividing the length by the width – and much is due to personal preference however owing to the alignment of the facets, a slight deviation of the LWR or cut grade can result in undesirable optical effects such as the dreaded 'bow tie' (a dark shadow to the centre of the stone). This visually heavy optical effect of course not only minimises the brilliance of the stone but has a negative impact on the value.

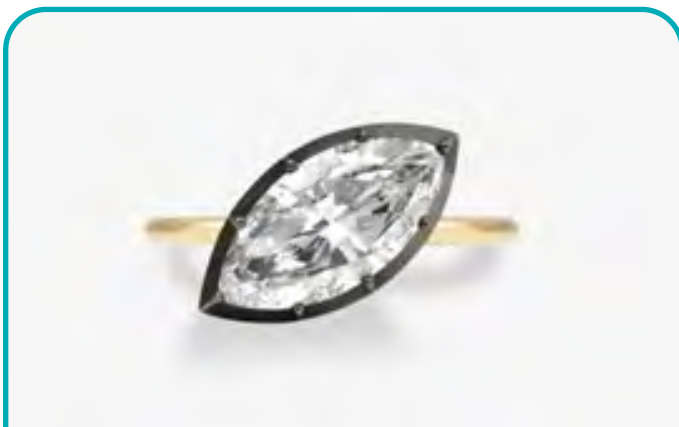


**A DIAMOND SINGLE STONE RING** The old marquise cut diamond, weighing 3.65 carats, in a six double claw mount, to a tapered shank, indistinctly stamped Platinum. Estimated colour I/J, estimated clarity Vs, strong fluorescence. Diamond measures approximately 14.79 x 7.97 x 4.93mm. We would look to insure this in the region of £70,000.

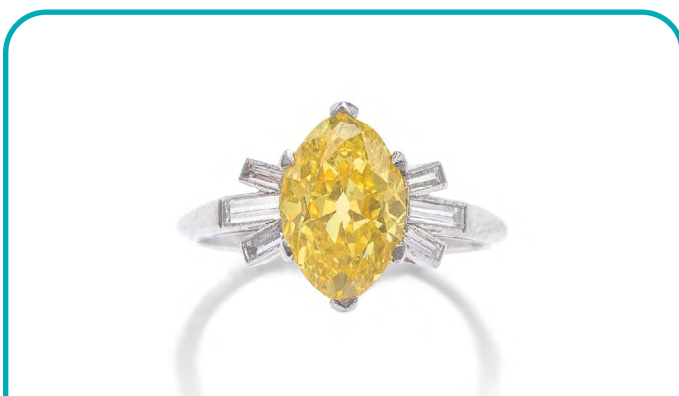


### Buyer Beware!

Above is an image of a 1ct marquise cut lab grown diamond, currently available to purchase online at only £365. As seen in the past year, the price of production for lab grown diamonds and therefore their subsequent retail prices are at an all-time low, with long term valuations set to look even lower and resale value almost negligible for synthetic diamonds. To compare as closely as possible, 1ct natural marquise cut diamonds with identical colour, clarity and cut grades, fluorescence and similar length-width ratio to the above lab grown stone (D, VS1, Excellent, none, 1.9-2.3) are retailing currently between £3,500 and £8,290 online at a reputable retailer. This massive discrepancy in prices and of course continued value for natural stones is not to be taken lightly – we would recommend purchasing your natural diamonds from a reputable source, with notable laboratory certification, and of course, ensuring that in the long run you have adequate and continued cover through a thorough insurance valuation from our specialist team.



Jessica McCormack – 3.52ct Tilted Marquise Diamond Button Back Ring, I colour, SI1 clarity. We would look to insure this in the region of £100,000.



**DIAMOND AND COLOURED DIAMOND RING.** The marquise-cut Fancy Vivid Yellow diamond, weighing 2.20 carats, between baguette-cut diamond shoulders. Accompanied by a report from GIA stating that the principal diamond is natural Fancy Vivid Yellow colour, VS1 clarity. We would look to insure this in the region of £120,000



#### ABOUT THE AUTHOR

#### Liz Bailey

With over 12 years in jewellery and watches, Liz holds FGA and DGA qualifications, chaired North West Gem-A, and delivers expert, detail-oriented valuations, continually updating her expertise through courses, conferences, and webinars.