



Exploring The Boodles National Gallery Collection

I was recently privileged enough to handle a very unique piece of jewellery by Boodles: The Boodles National Gallery Collection's Play of Light Lake Keitele bangle.

In light of one of the nation's favourite museum's 200th anniversary, Boodles has created a special National Gallery Collection of jewellery. The National Gallery is considered one of the world's greatest art collections and opened its doors in 1824, after the British government purchased 38 paintings from the heirs of John Julius Angerstein that same year. The museum now holds paintings by Botticelli, Caravaggio, Cézanne, Constable, Ingres, Holbein, Seurat, Titian...to name but a few. But it wasn't always a guarantee that these masterpieces would be remain within the collection, safely. During the Blitz, the collection was distributed in safe houses, until it found its way to a Welsh slate mine, where the artwork stayed between 1941-45. When the bombing was less intense, the museum decided to show one painting a month. This is the origin of the museum's current Picture of the Month. The picture was taken down every evening for safe storage in the museum's underground strong room.

Now, 200 years after the museum opened, Boodles have celebrated the extraordinary collection by creating a unique line of high jewellery inspired by the artists and their creations.

The paintings have generated four specific themes around which the jeweller "plays" with: Perspective, Brushstrokes, Motherhood and Play of Light.

Perspective

Inspired by Canaletto's view of Venice and mastering of perspective, Boodles have created the Perspective Collar set with 12 main Ashoka diamonds weighing 9.04cts total, and

14.29cts of remaining diamonds. A jewelled architectural delight, it is mounted in platinum and reflects the Doge's palace beautifully.

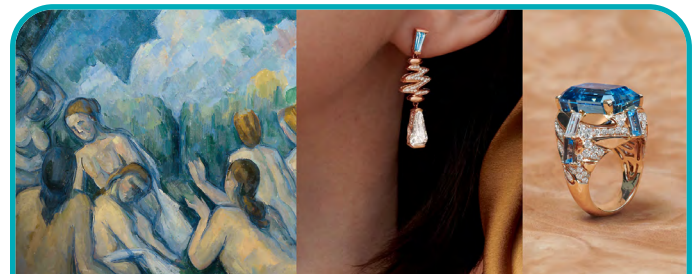


The Perspective Collar by Boodles and Canaletto's Venice: The Basin of San Marco on Ascension Day (circa 1740) (detail) from the Perspective collection

"The Ashoka cut diamond was perfect for Perspective, the vertical lines and unique cut worked so well with the idea of an architectural landscape" says Boodles Director of Design, Rebecca Hawkins.

Brushstroke

For the Brushstroke collection, "we drew on for inspiration [from] the brushstroke technique used by particular artists. We found that within some paintings, such as Van Gogh's Sunflowers, 1888, the brushstrokes employed were very visible - you could literally see the way in which the paint had been applied to paper. This in turn inspired our Brushstrokes suites."



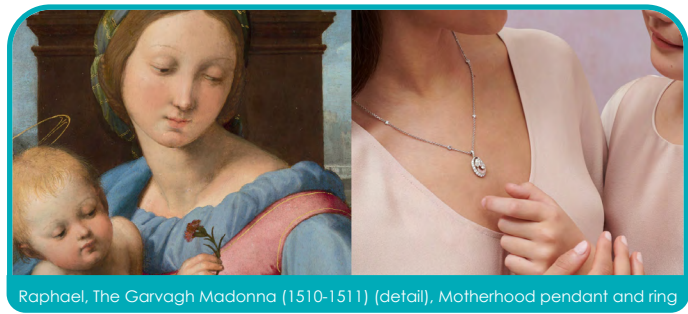
Cezanne, Les Grandes Baigneuses (circa 1900) (detail), Brushstrokes Diamond Rose Gold Earrings and Brushstrokes Aquamarine Ring

Cezanne, Les Grandes Baigneuses (circa 1900) (detail), Brushstrokes Diamond Rose Gold Earrings and Brushstrokes Aquamarine Ring The use of aquamarine in this collection is a statement to the use of blue brushstrokes in

Cézanne artwork, along with the feminine rose gold and scintillating diamonds, giving this collection a dynamism echoed in his technique.

Motherhood

In the Motherhood collection, there is a clear selection of "soft" gems and colours. The pendants, rings and bracelets all use diamonds, but also pink diamonds, and moonstone, where "pear and oval shaped diamonds [are] nestled together, reflecting the idea of an embrace."



Raphael, The Garvagh Madonna (1510-1511) (detail), Motherhood pendant and ring

In the Motherhood Aquamarine pendant, the use of aquamarine reminds me of water and of babies in utero, with the moonstone's shimmering warm colours, all encompassed within the solid and indestructible diamond frame. But of course, it also echoes the Madonna with child. The interpretation is up to the eye of the beholder. This pendant retails for £15,000, while its counterpart in diamond and pink diamond retails for £29,000.



Motherhood Aquamarine Pendant



Motherhood Pendant

Play of Light

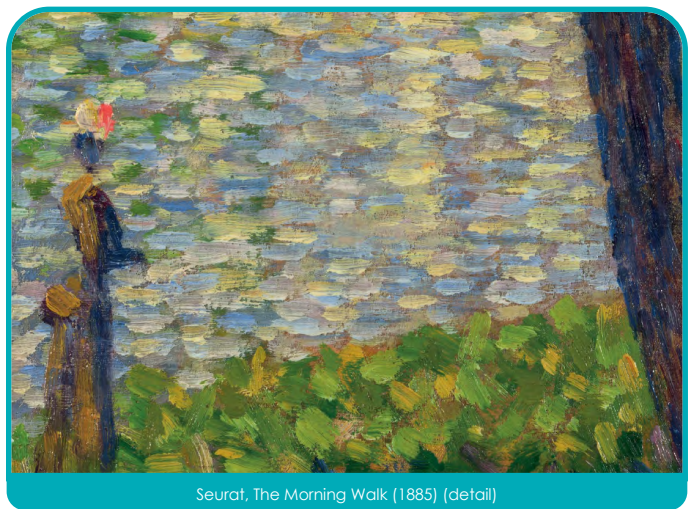
In the fourth collection, Boodles designers concentrated on colour and how the same colour can have many different tones. Just as a diamond can range from D-Z, fancy colours



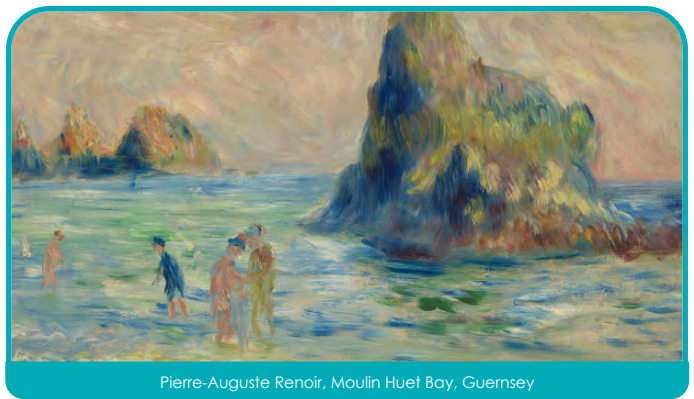
Colour chart for grading pink diamonds

range from Faint to Fancy Deep.

"In our Play of Light collection for example we used different gradients of the same colour diamond or gemstone to reflect the detailed dabs of colours found in the paintings. We used yellow diamonds, which gradually became lighter until they flowed into white diamonds, or soft pastel blues deepening to a darker blue." Four main pictures were the base for inspiration: Seurat's The Morning Walk, Monet's Water-Lilies, Pierre-August Renoir's Moulin Huet Bay, Guernsey, and Akseli Gallen-Kallela's Lake Keitele.



Seurat, The Morning Walk (1885) (detail)



Pierre-Auguste Renoir, Moulin Huet Bay, Guernsey

The Play of Light Rose Gold Drop Earrings use a variety of gems, including vari-coloured sapphires, tsavorite garnets



Play of Light Rose Gold Drop earrings

(green), vari-cut diamonds and rose gold for added softness and extra shimmer. They retail for £23,500 and are accompanied by a necklace and a bracelet, each retailing at £28,000 and £76,500.

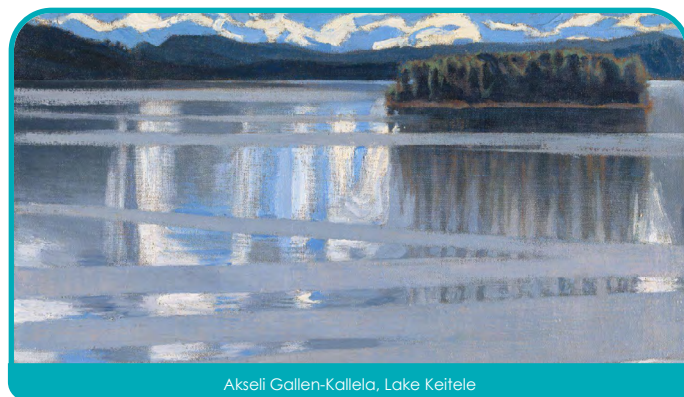


Play of Light Rose Gold Drop necklace



Play of Light Rose Gold Drop bracelet

The piece in this collection I was lucky enough to discover was inspired by Finnish painter Akseli Gallen-Kallela's Lake Keitele painted in 1905. "Boodles designers responded to the distinctive zigzag pattern on the water's surface in Lake Keitele, 1905 by Akseli Gallen-Kallela, now mirrored by rows of marquise cut diamonds."



Akseli Gallen-Kallela, Lake Keitele



Play of Light Lake Keitele necklace

In each of the pieces, the reflection of the water is represented with the use of graduated brilliant and marquise-cut diamonds, each serving as a mirror of light, with more or less fire depending on the light. Just as in the painting by Akseli Gallen-Kallela there are white and blue tones but also specs of red and green and yellow. It is the special

always varying shimmer of the stones, that make this collection so unique.

The earrings use 2.79cts of marquise-cut diamonds and 1.44cts of round brilliant-cut diamonds. The necklace uses respectively 3.05cts and 0.86cts and the bangle is set with 22 principal marquise-cut diamonds weighing 6.99cts, and 4.59cts of brilliant-cut diamonds. The water's movement is here "mirrored by rows of marquise cut diamonds to create a mesmerising piece."

It was also mentioned that the design reminded someone of a DNA chain. Whether you take your inspiration from impressionism art or science, if the result is as beautiful as this collection is then there truly is no limit!



Play of Light Lake Keitele ring



Play of Light Lake Keitele earrings